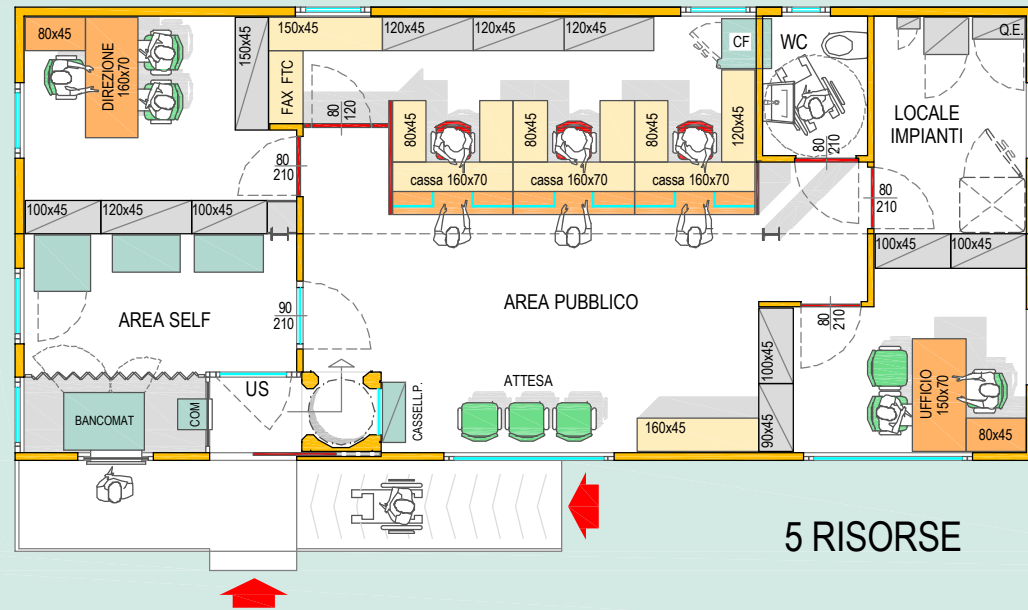


PRESTIBANK®

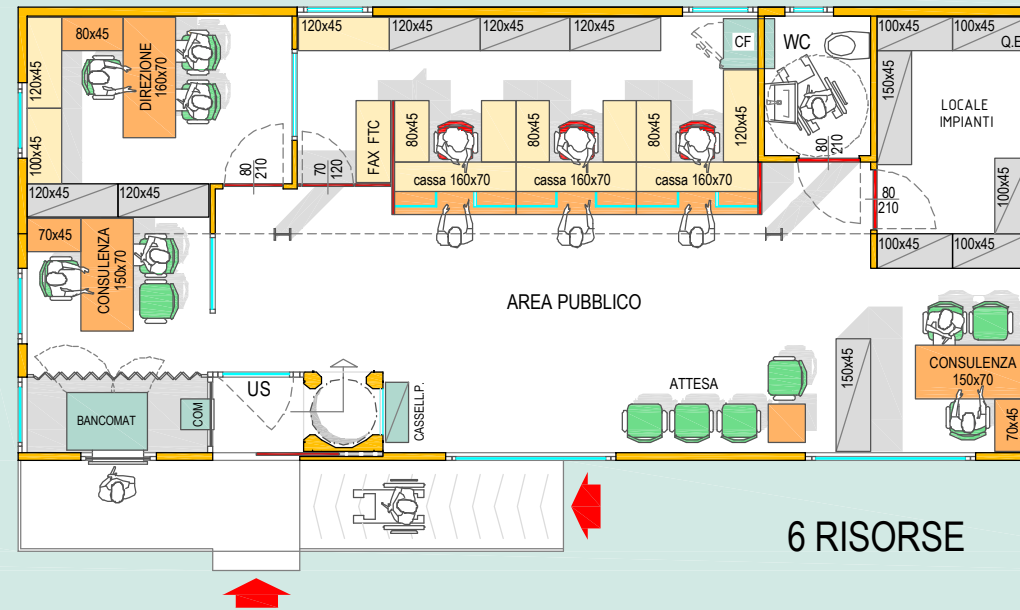
PREFABBRICATI BLINDATI
NOLEGGIO E PRODUZIONE BANCHE MOBILI
www.prestibank.it

MODULO BLINDATO 1350x600

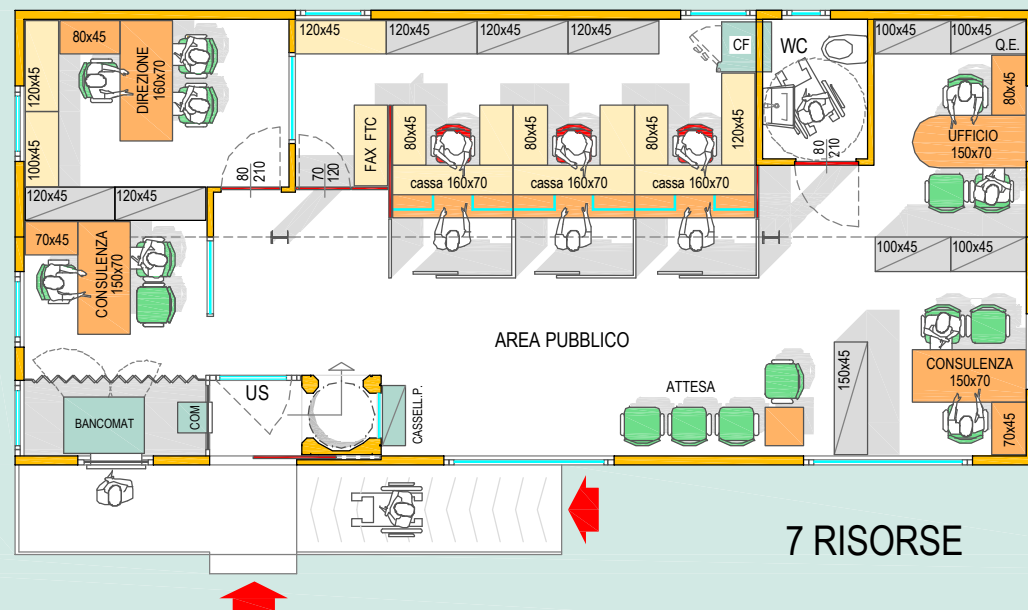
ABACO RISORSE OPERATIVE



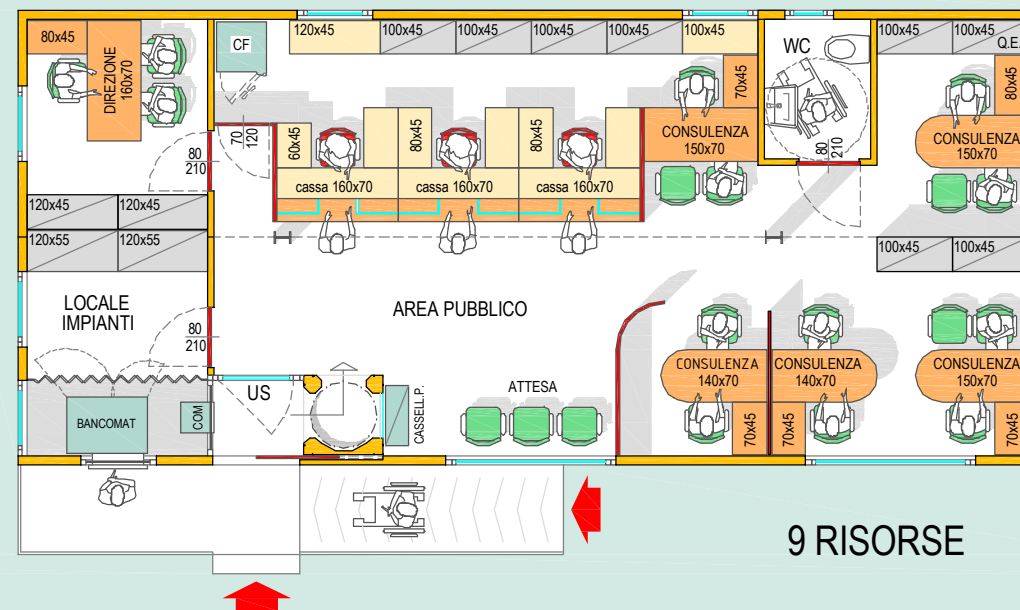
5 RISORSE



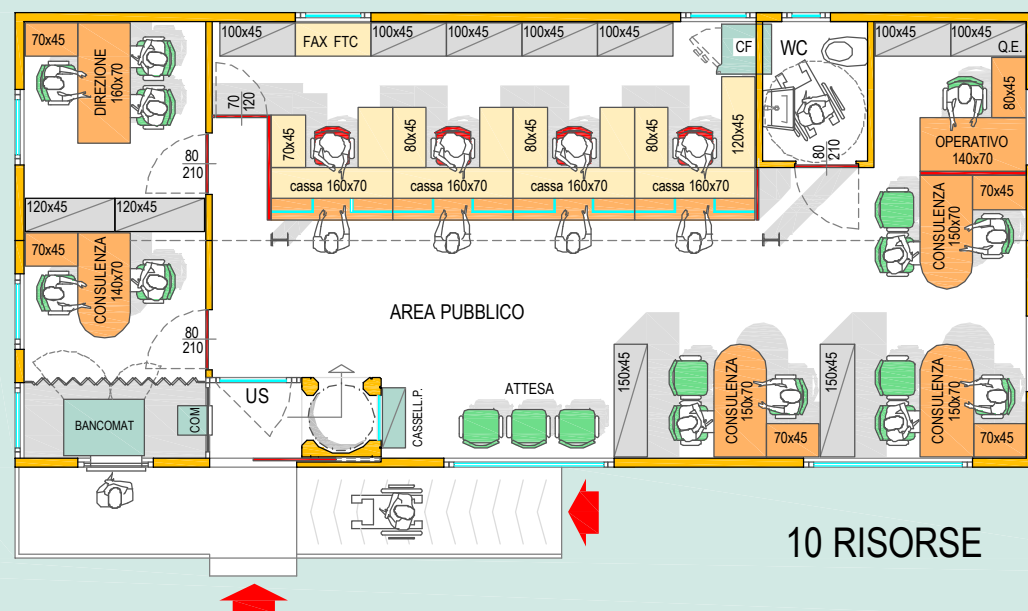
6 RISORSE



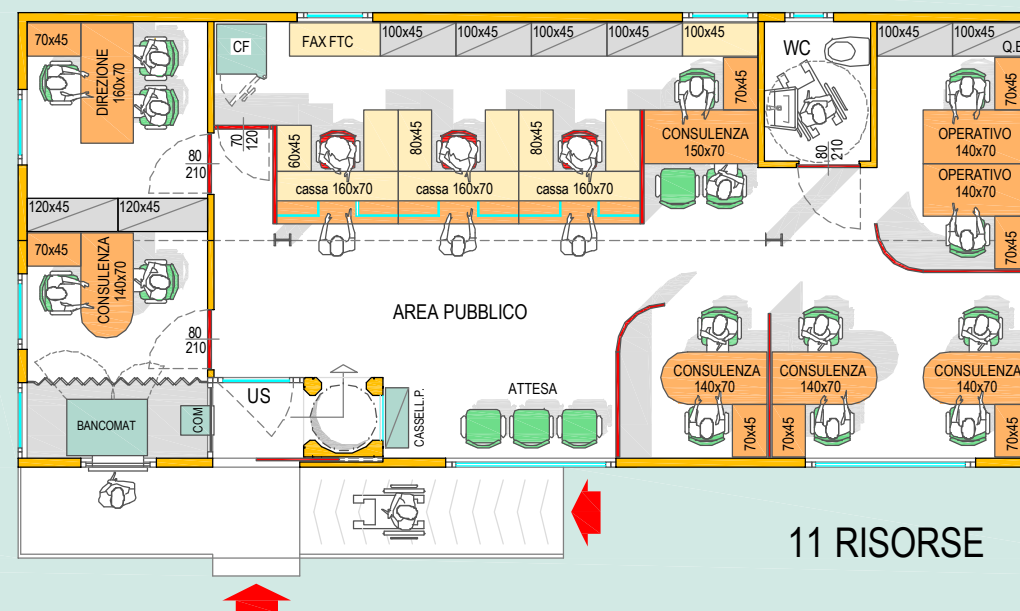
7 RISORSE



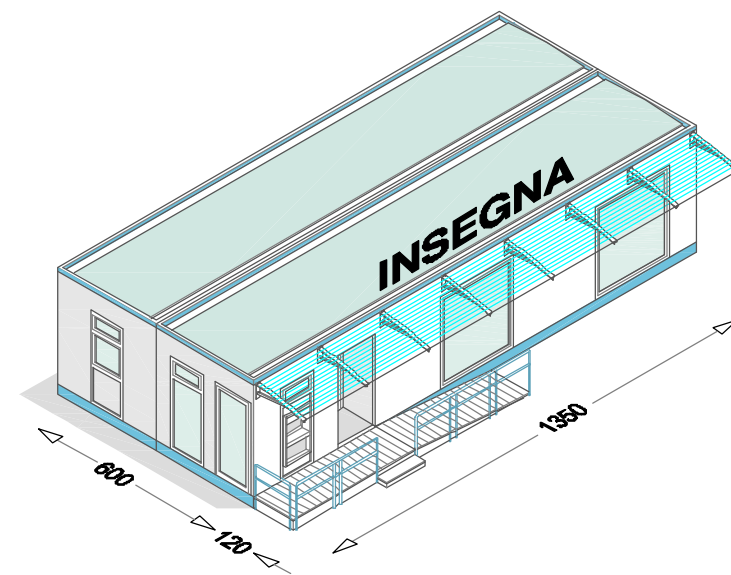
9 RISORSE



10 RISORSE



11 RISORSE



- Dimensioni Esterne (L x P x H) : mt. 13,50*6,00*3,40
- Altezza Interna : mt. 2,70
- Superficie Coperta : mq. 81,00
- Peso Complessivo (escl. Bancomat) : kg. 26.000
- Portata Struttura Pavimento : Kg./mq. 800
- Portata Struttura per Mezzi Forti : Kg./mq. 2.000
- Portata Colmo : Kg./mq. 250
- Spinta Vento : Kg./mq. 250
- Antiscismicità : S.12 (Scala Mercalli)
- Temperatura Esercizio : -15° / +45°

Meschiari ufficio

Meschiari ufficio S.r.l. via Morbidina 2/d, 41012 CARPI (MO)
T. 059 6228058 - F. 059 645470 - e-mail: info@prestibank.it